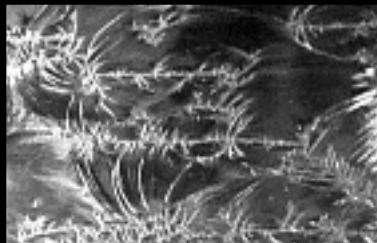


# Duncan Architectural Art Glass

Duncan glass textures are manufactured by hand using a proprietary manufacturing process which is based loosely on the traditional glass sculpting technique called "glue chipping". This is the first advancement in this surface sculpting process in over 100 years. It is the careful control in manufacturing and the attention to detail that insures the pristine, translucent, light enhancing surface which is the characteristic of all Duncan Glass textures. All of the available Duncan textures distort and obscure visually without reducing transmitted light and are designed to maintain visual interest when used in large fields.

Sheet Size is changing from: 24" x 30"; 5 sq. ft. (.46 m<sup>2</sup>); 1/8" (3mm) thick  
 to: 24" x 36"; 6 sq. ft. (.56 m<sup>2</sup>); 1/8" (3mm) thick



GC5-CASCADE™



GC5-OCEAN™



GC5-RAIN™



GC5-SEAFOAM™



GC5-TSUNAMI™



GC5-OKI™

™Duncan Architectural Art Glass

## Clear Glue Chip

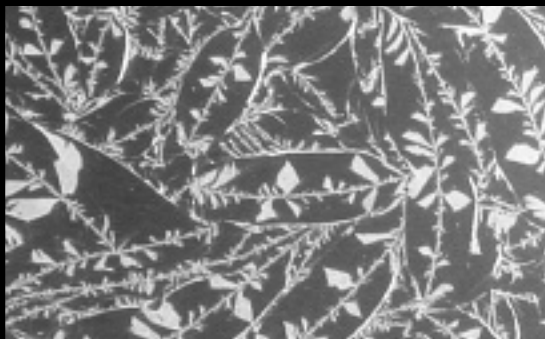
This crystal clear glass resembles a window after a visit from Jack Frost.

A fern-like pattern on one surface that was popular at the turn of the century makes a pleasant background for windows, etc.

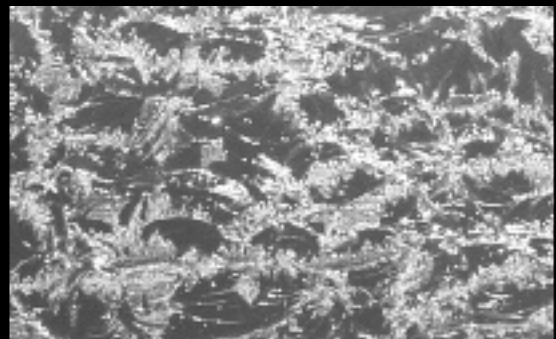
GC-6DBL (Double Glue Chip) is a smaller tighter pattern than GC-6 (Single Glue Chip).

| Description     | Thickness     | Sheet Size: 24" x 36" (61 x 92cm) or 6 sq. ft. (.56 m <sup>2</sup> ) |
|-----------------|---------------|--|
| GC-6 Crystal    | 1/8" (3mm)*   | *600 sq. ft. = 55.7m <sup>2</sup> closed case quantity.              |
| GC-6DBL Crystal | 1/8" (3mm)*   | **360 sq. ft. = 33.4m <sup>2</sup> closed case quantity.             |
| GC-6.5 Crystal  | 3/16" (5mm)** |  |

### SINGLE GLUE CHIP



### DOUBLE GLUE CHIP

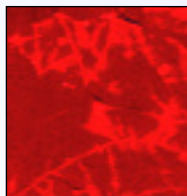


Photos were taken with a black background so that the texture would be more visible. The glass itself is transparent and colorless.

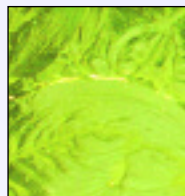
# Wissmach Colored Glue Chip



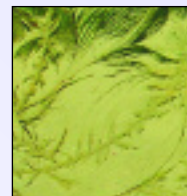
**GC-01-IRID-SM**  
**GC-01-IRID-LG**  
Clear Iridized Glue Chip  
GCD (-SM) (-LG)



**GC-18-SM**  
**GC-18-LG**  
Red Glue Chip  
GCD (-SM) (-LG)



**GC-31-SM**  
**GC-31-LG**  
Yellow Glue Chip  
GCD (-SM) (-LG)



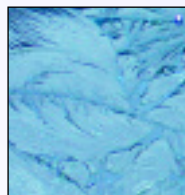
**GC-35-SM**  
**GC-35-LG**  
Light Amber Glue Chip  
GCA (-SM) (-LG)



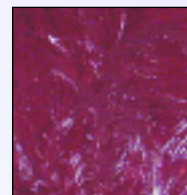
**GC-49-SM**  
**GC-49-LG**  
Medium Amber Glue Chip  
GCA (-SM) (-LG)



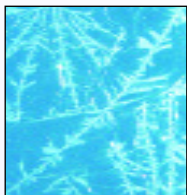
**GC-51LL-SM**  
**GC-51LL-LG**  
Translucent White Glue Chip  
GCB (-SM) (-LG)



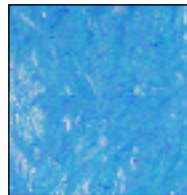
**GC-118-SM**  
**GC-118-LG**  
Pale Blue Glue Chip  
GCA (-SM) (-LG)



**GC-135-SM**  
**GC-135-LG**  
Medium Purple Glue Chip  
GCA (-SM) (-LG)



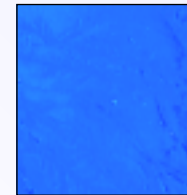
**GC-158-SM**  
**GC-158-LG**  
Peacock Blue Glue Chip  
GCA (-SM) (-LG)



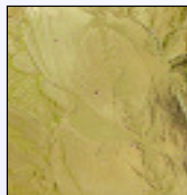
**GC-189-SM**  
**GC-189-LG**  
Light Blue Glue Chip  
GCA (-SM) (-LG)



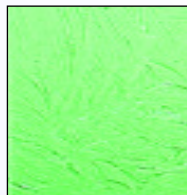
**GC-218-SM**  
**GC-218-LG**  
Light Violet Glue Chip  
GCA (-SM) (-LG)



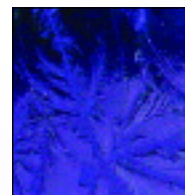
**GC-220-SM**  
**GC-220-LG**  
Dark Blue Glue Chip  
GCA (-SM) (-LG)



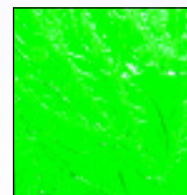
**GC-276-SM**  
**GC-276-LG**  
Pale Apricot Glue Chip  
GCB (-SM) (-LG)



**GC-309-SM**  
**GC-309-LG**  
Light Green Glue Chip  
GCA (-SM) (-LG)



**GC-311V-SM**  
**GC-311V-LG**  
Dk. Violet Glue Chip  
GCA (-SM) (-LG)



**GC-343-SM**  
**GC-343-LG**  
Green Glue Chip  
GCA (-SM) (-LG)

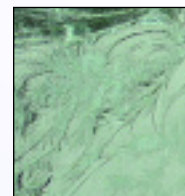
Colors may vary per shipment.

The following colors will vary per shipment: 218, 276, 568.

Sample Box (Colored Glue Chip).  
Order as GC-SB.



**GC-418-SM**  
**GC-418-LG**  
Pale Purple Glue Chip  
GCA (-SM) (-LG)



**GC-555-SM**  
**GC-555-LG**  
Light Grey Glue Chip  
GCB (-SM) (-LG)



**GC-568-SM**  
**GC-568-LG**  
Champagne Pink Glue Chip  
GCB (-SM) (-LG)

Colored Glue Chip sheets vary in size. They are offered as small or large sheets.

Small sheets range from: 32" x 20" to 32" x 31".

Large sheets range from: 32" x 32" to 32" x 42".

We will ship the sheet sizes that are available within the size range you select.